



## Spars, Rigging, and Hardware for Sailboats

Rig-Rite, Inc.

Phone: (001) 401-739-1140 -- FAX: (001) 401-739-1149

[www.RigRite.com](http://www.RigRite.com) [Ordering/Questions](#)

# Kenyon Spars 3350 MORC Section

## Kenyon Spars 3350 MORC Section

Measurements (outside): 5.00" x 3.30" (127mm x 84mm)

Wall Thickness (minimum): .090"

Weight/ft.: 1.65 lbs.

Moments of inertia:  $I_{xx} = 4.60"$ ,  $I_{yy} = 1.96"$

Circumference: 13 13/16"

Sail slides: 1/2" round slugs (A018, A118) or 1/2" boltrope

Alloy: 6061-T6

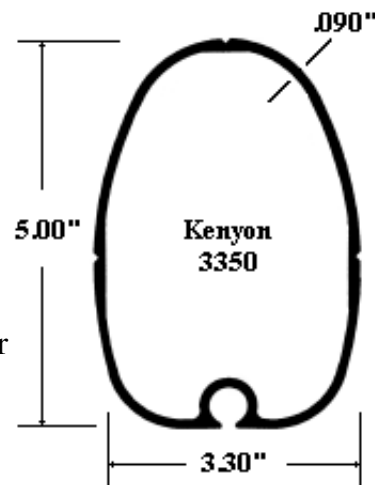
Standard Mast Lengths: 33' 9.5", 40'6"

**Common Mast usage:** Andrews 27; Capri 25\*; Evelyn 26MH; Hunter 23; Kirby 25\*; Merit 25\*; O'Day 23 Mk.2\*; Parker-Dawson 26\*;

Ranger 26; Seidelman 24; Texas T-26;

**Common Mast usage - Tapered:** 11 Meter; Impulse 26; Wavelength 24;

This Section was occasionally used as a Boom, See [3350 Boom Page](#).



## Kenyon 3350 Mast Section

**3350 Mast Section - Clear Anodized: K-X3350CA-\_\_\_:**

**3350 Mast Section - Raw: K-X3350R-\_\_\_:**

Kenyon 3350 Section Mast Tube is stocked in a variety of lengths (listed above) fully anodized or raw (mill finish), it can also be cut to shorter lengths. **To order, specify length.**

Sections can also be milled for the sailgate or other components, painted finishes and other lengths are available on special order, Please specify. If you require a complete Mast Assembly, you can select from components below and contact us with specifications.

## 3350 Standard Mast Hardware

Listed below are parts specific to the Kenyon 3350 Mast Section. For more generic parts, see [Kenyon Exit Blocks](#), [Kenyon Exit Plates](#), [Kenyon Shroud Tangs](#), and other categories listed under [Kenyon Spar Parts](#). There are many parts for specific configurations that are not listed here. If you require 3350 Mast Components not listed here please contact us with details.

## Mastheads

Listed below are standard mastheads for the Kenyon 3350 MORC Section. A variety of Custom Mastheads are available as well, please inquire. Tapered masts normally use welded-in mastheads for maximum strength with minimum weight. Most 3350 Mastheads are normally supplied with **K-198-7P** Nylatron sheaves for use with rope. Aluminum sheaves, **K-198-7A**, are available for use with wire. Mastheads work optimally with 3/8" or smaller halyards.

***Masthead Assembly for Masthead Rig - Aluminum Sheaves: K-1800:***

Double channel extruded aluminum Masthead Assembly for 3350 mast section incorporates (4) sheaves, **K-198-7A**, for internal or external rope halyards of all types up to 3/8" diameter. Includes slotted SS toggles with 5/16" pins (**K-1659**) for headstay and backstay attachment, and 1/4" topping lift pin. Masthead fits in 2 7/16" x 1 3/8" wide slot cut into fore & aft sides of the mast tube. Sheave axle/Topping lift Pin (1/4") is **K-10563**, Toggle support Pin (5/16") is **K-RP5-44**. Use with 3350 Masthead Cap **K-10888** (order separately). Pre-drilled for attachment of Spinnaker Halyard Bail **K-1422** (order separately). Channel is 9 7/8" long, and attaches to the mast with (2) 1/4" bolts.



***Masthead Sheave - Plastic: K-198-7P:***

Light weight Nylatron Sheave for use with wire or rope. Sheave is 1 3/4" OD x 31/64" wide x 3/8" ID, and rides on Bronze Bushing **K-9523**, for use with standard 1/4" axle.

***Masthead Sheave - Aluminum: K-198-7A:***

Anodized Aluminum Sheave for use with wire or rope. Sheave is 1 3/4" OD x 31/64" wide x 3/8" ID, and rides on Bronze Bushing **K-9523**, for use with standard 1/4" axle.



***Masthead Sheave Bushing: K-9523:***

Sintered Bronze Sheave Bushing measures 3/8" OD x 1/4" ID x 1/2" long, for use on standard 1/4" axle.

***Spinnaker Halyard Bail: K-1422:***

SS plate is welded to 1/4" bail. Designed for use with Kenyon 1 3/8" wide double channel Masthead Assembly. Attaches with (2) #10 x 1/2" screws and locknuts.



***Mast Head Cap: K-10888:***

Mast Head Cap for 3350 fastens to top of any Kenyon inset single or double channel mastheads (in untapered masts) to seal

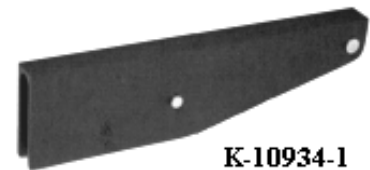
mast end and provide a flat mounting surface. Cap size is slightly larger than 3350 mast section. Aluminum with black epoxy finish.

***Trisect Masthead Assembly for Tapered Mast: K-3350TSH:***

Trisect Triple channel Masthead Assembly is welded in 3350 Tapered mast section and incorporates (3) 2", and (1) 2 1/2" diameter aluminum sheaves for internal wire or rope halyards. Dedicated main and jib halyards are on centerline, with 2 wing halyards offset P and S. Strong, low-windage design features lightening holes for additional weight savings. Includes 3/8" pins for attachment of Backstay and for Headstay toggle, and 5/16" topping lift pin. Masthead is 10" long, and Backstay Crane extends 6" beyond the aft face of the mast. Jib and Wing halyard Sheaves are **K-198-8AB4** (2" OD), Main halyard Sheave is **K-198-10AB4** (2 1/2" OD). **As used on Wavelength 24.**

***Fractional Masthead Assembly w/ Single Sheave: K-10934-1:***

Single channel extruded aluminum Masthead Assembly for 3350 mast section incorporates (1) Nylatron sheave, **K-198-7P**, for internal main halyard, and backstay crane with 5/16" pin. Includes 1/4" pin for topping lift attachment. Masthead fits in 2 7/16" x 3/4" wide slot cut into fore and aft sides of the mast tube. Use with Masthead Cap **K-10888** (order separately). Channel is 10 1/2" long, and attaches to the mast with (2) 1/4" bolts. **As used on Hunter 23.**



***Fractional Masthead Assembly w/ Two Sheaves: K-10934-2:***

Single channel extruded aluminum Masthead Assembly for 3350 mast section incorporates (2) Nylatron sheaves, **K-198-7P**, for use with internal or external main halyard, and backstay crane with 5/16" pin. Includes 1/4" pin for topping lift attachment. Masthead fits in 2 7/16" x 3/4" wide slot cut into fore and aft sides of the mast tube. Use with Masthead Cap **K-10888** (order separately). Channel is 10 1/2" long, and attaches to the mast with (2) 1/4" bolts.

***Mast Head Cap for 3350 Mast: K-10888:***

Mast Head Cap for untapered 3350 mast fastens to top of any Kenyon inset single or double channel mastheads to seal mast end and provide a flat mounting surface. Cap size is slightly larger than 3350 mast section. Aluminum with black epoxy finish.

***Fractional Weld-in Masthead for Tapered Mast: K-10317P:***

Weld-in Single channel Fractional Masthead for 3350 Tapered mast section incorporates provisions for (1) 1 3/4" diameter sheave, for internal main halyard. Strong, low-windage design includes (2) 1/4" pins for sheave axle and Backstay attachment. Masthead is 9 7/8" long (maximum) x .775" wide and Backstay Crane extends 6" beyond the aft face of the mast. Masthead is designed to be welded into the mast Section and is unfinished. Does **not** include sheave. **As used on 11 Meter.**

***Mast Head Cap for Tapered Fractional Mast: K-11889-1:***

Mast Head Cap for 3350 fastens to top of fractional masthead with standard Kenyon taper to seal mast end and provide a flat mounting surface. Cap size is slightly larger than 3350 mast section with standard Kenyon taper. Aluminum with black epoxy finish. **As used on 11 Meter.**

---

***Jumper Strut Assembly: K-3350JA-11:***

Fabricated aluminum Jumper Strut Assembly fits 3350 Mast Section. Unit combines SP-1 Jumper Struts at 130 degree angle with 1/2" OD Crossbar in a compact, lightweight unit. One-piece welded and anodized Assembly fastens to mast with (6) 1/4" fasteners. Base measures 3" high, unit is (maximum) 27 1/2" wide and projects 5 1/4" forward of mast. SP-1 Struts use **K-9409** removable Spreader Tips (included), to captivate Jumper Stays. **As used on 11 Meter.**



***Stainless Steel Jib Box Assembly: K-84030:***

Internal SS Jib Box Assembly for fractional rigs combines 2 sheaves and integral forestay attachment nose in one compact, low-windage unit. Unique design allows both halyards to be used for jibs and/or spinnakers. Aluminum sheaves for wire or rope will handle halyards up to 5/16" diameter. Assembly fits in mast cutout 2 1/2" high x 1 1/8" wide, and fastens with (8) #10 (3/16") fasteners. Used successfully on boats in the 21' to 26' range, unit has 1/4" hole for forestay attachment.



***Stainless Steel Jib Box Assembly: K-10885:***

As **K-84030** (above), but with reinforced 5/16" hole for forestay attachment.

***Aluminum Jib Box Assembly w/ 5/16" Pin: K-11591A:***

Cast aluminum internal Jib Box Assembly with 5/16" pin and 5/16"

Forestay Toggle. Unit combines 2 sheaves in an over/under configuration, with an integral forestay attachment pin in one compact, narrow and lightweight unit. Dedicated Spinnaker and jib halyards are both well shielded from the 5/16" forestay pin. Features heavy-duty Nylatron Sheaves: (1) 2" Sheave for Spinnaker Halyard, **K-11638**; and (1) 1 1/2" Sheave for Jib Halyard, **K-11595**. Sheaves are 1/2" wide for snag free handling of halyards up to 3/8" diameter. Assembly fits in mast cutout 5 1/2" high x 7/8" wide, and fastens with (4) #10-24 machine screws (included). Internal mounting flange is slightly curved to fit a variety of masts. Assembly is designed to fit through the mounting slot and is then fastened from the outside. Forged Chrome Bronze Toggle, **MER 5770-410**, is included. Unit measures 8" long x 7/8" wide and projects 1 3/4" inside of mast. Suitable for use with a variety of mast sections on boats with forestays up to 3/16" diameter. A-4

**K-11591A**

**Aluminum Jib Box Assembly w/ 3 Sheaves: K-11590A:**

Identical to **K-11591A** (above), but jib halyard (lower) sheave is replaced with 2 narrow sheaves and a dividing plate. Nylatron jib halyard sheaves, **K-11593**, are 1 1/2" diameter x 7/32" wide, and suitable for use with wire up to 5/32" diameter, and line up to 3/16". Jib halyard sheaves are mounted on special removable axle, making it easy to lead halyards. **As used on Evelyn 26.**

---

**Bow Light Base Pad (round): K-9356-1:**

Black urethane mounting pad provides low-profile mount for **K-11019** (or Perko 5686) bow light. Molded to fit 3350 mast section, pad is 2 3/8" diameter and fastens to mast with (3) #8 screws.

**Bow Light (round): K-11019:**

When mounted vertically on **K-9356** Base Pad the **K-11019** functions as a 20 point Bow/Steaming/Masthead Light. When mounted horizontally on top of mast it functions as a 360 degree all-around anchor light. Round base is 2 3/8" diameter and fastens with (3) #8 screws. Requires 3/4" hole for socket. 12-volt light uses GE # 90 bulb (included).

**K-11019**


---

## Spreaders

The Kenyon 3350 mast section is normally used with Kenyon [SP-2.2](#) airfoil spreaders, which measure 1 7/8" (fore and aft) x 3/4" (vertically). For Spreader details, or to order replacement

Spreaders, see [Kenyon Spreader Sections](#).

**Spreader Bracket Ass'y - 0 degree aft, Port: K-10418-6P:**

**Spreader Bracket Ass'y - 0 degree aft, Starboard: K-10418-6S:**

SS welded Spreader Bracket Assembly for 3350 mast section. Formed plate has welded stud to fit Kenyon SP 2.2 Spreader. This strong fitting reduces windage to a minimum. Plate measures 3" high x 4 1/4" long to spread loading over a larger area and attaches to the mast with (8) 3/16" (#10) fasteners. Note: this unit only, installs with center rivets 5/8" forward of tube centerline. For in-line spreaders. **As used on some Merit 25's, and others.**



**K-10418-P**

**Spreader Bracket Ass'y - 13° aft, Port: K-10418-7P:**

**Spreader Bracket Ass'y - 13° aft, Starboard: K-10418-7S:**

As **K-10418-6**, but with studs angled for spreaders swept 13 degrees aft. **As used on Texas T-26 and others.**

**Spreader Bracket Ass'y - 17° aft, Port: K-10418-4P:**

**Spreader Bracket Ass'y - 17° aft, Starboard: K-10418-4S:**

As **K-10418-6**, but with studs angled for spreaders swept 17 degrees aft. **As used on Impulse 26, Ranger 26 and others.**

**Spreader Bracket Ass'y - 25° aft, Port: K-10418-8P:**

**Spreader Bracket Ass'y - 25° aft, Starboard: K-10418-8S:**

As **K-10418-6**, but with studs angled for spreaders swept 25 degrees aft. **As used on some Hunter 23's, Seidelman 24 and others.**

## Spreader Bars:

For High Performance applications designers frequently specify Kenyon thru-bar spreader systems. These systems have been proven through many years of top-level racing, and are now the norm on most racing yachts. Standard spreader bars for the 3350 section are listed below. Other angles are available on a special order basis.

**Spreader Bar for SP-2.2 Spreader - 0 degree aft: K-11777:**

Anodized aluminum Spreader Bar is used on the 3350 mast section with Kenyon SP-2.2 Spreaders. Installed through a slot in the mast, the bar is held in place by the spreaders. Has 5-degree vertical angle. For rigs with in-line spreaders.

**Spreader Bar for SP-2.2 Spreader - 6° aft: K-11777-6:**

As **K-11777**, but angled for spreaders swept 6 degrees aft. **As used on 11 Meter.**

**Spreader Bar for SP-2.2 Spreader - 10° aft: K-11777-10:**  
As **K-11777**, but angled for spreaders swept 10 degrees aft.



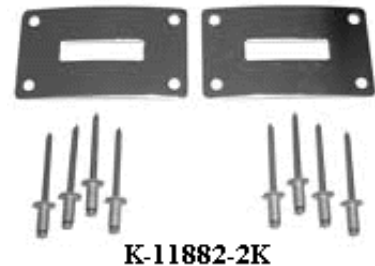
K-11777-10

**Spreader Bar for SP-2.2 Spreader - 15° aft: K-11777-15:**  
As **K-11777**, but angled for spreaders swept 15 degrees aft.

**Spreader Bar for SP-2.2 Spreader - 17.5° aft: K-11777-17:**  
As **K-11777** (above), but angled for spreaders swept 17.5 degrees aft.

**Spreader Bar for SP-2.2 Spreader - 20° aft: K-11777-20:**  
As **K-11777**, but angled for spreaders swept 20 degrees aft.

**Spreader Bar Reinforcing Plate Kit for 3350 Mast: K-11882-2K:**  
Formed SS Reinforcing Plates have rectangular slot to fit all standard SP2.2 Spreader Bars, **K-11777 series**, above. SS plates reinforce Mast and prevent wear and elongation of slot in mast where Spreader Bar passes through. Plates are 3" long x 1 3/4" high with rectangular slot and fasten to mast with (4) 3/16" (#10) fasteners. Kit includes 2 plates (port & starboard), (8) 3/16" SS rivets, and installation instructions - Spreader Bar from **K-11777 series**, above, must be ordered separately.



K-11882-2K

---

**Mast / Spinnaker Eye: K-85783-1:**

For attachment of whisker or spinnaker pole on the front of the mast. Used where vertical adjustment of inboard pole end is not required. Heavy duty ring is welded to SS plate curved to fit 3350 mast section. Ring is 5/16" x 1 3/8" ID. Plate is 2 1/2" square and fastens with (6) 3/16" (#10) fasteners.



K-85783-1

**Spinnaker Pole Stowage Eye: K-11888:**

Similar to **K-85783-1** (above), but with eye welded *vertically*, for pole stowage, when not in use. **As used on 11 Meter.**



**Winch Pad for 3350: K-11548:**

Black Urethane Winch Pad is 3 7/8" diameter, and molded to fit on centerline of 3350 section. Pad insulates winch from mast wall and properly seats it for mounting. Pad is attached to mast with 1 screw, holes for screws to mount winch are then drilled through pad and tapped in mast wall.



**Spar Cleat - 5" long: Ken D-10325:**

Cast Aluminum Spar Cleat is a low-profile design with a narrow base suitable for use with line up to 1/2" diameter. Black Epoxy coated Cleat is 5" long, and fastens to spar with (2) 7/32" (#12) FH screws on 1 1/2" centers. **See also**, other [Kenyon Spar Cleats](#).




---

**Sail Slide Stop: K-11198:**

Sail Slide Stop works to keep sail slides from coming out of the sail entrance when the mainsail is lowered. Aluminum Slide Stop is 7/16" diameter x 1" long with SS thumb screw, thumb screw features captive nylon washer to prevent damage to mast surface.



**Roller Prefeeder: K-11087:**

Heavy-duty SS Roller Prefeeder automatically feeds boltrope mainsails into mast. Large diameter rollers eliminate friction and chafe. Supplied with threaded slug and screws to clamp it in luff groove, below sail entrance. Adjust higher or lower until feeding is perfect. Fits any mast section that uses boltrope.




---

## Gooseneck Brackets & Boom Attachments

Kenyon MORC Mast sections can have a Boom attached using one of the Gooseneck Brackets listed below, but can also be used with special Gooseneck Slides for Small Boltrope, **See: [Gooseneck Slides for Boltrope Groove](#)**.



**Gooseneck Bracket for 1" Toggle: K-11050:**

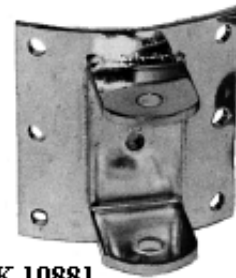
Used with Kenyon "D" section and smaller booms, this SS welded Gooseneck Bracket fits standard Kenyon 1" SS Toggle (**K-1993**) with **1/4" vertical pin**. Fastens to 3350 mast section with (6) 3/16" (#10) fasteners. Base is 2 1/2" vertical x approximately 2 3/4" wide.

**Gooseneck Toggle - 1": K-1993:**

Used with the **K-11050** gooseneck bracket, and Kenyon "D" section and smaller booms, this SS toggle measures 1" square x 1 1/8" long. Takes 1/4" vertical and horizontal pins.

**K-1993****Gooseneck Bracket for 1 1/2" Toggle w/ 1/4" Pin: K-10881:**

SS welded Gooseneck Bracket fits standard Kenyon 1 1/2" SS Toggle assembly with reef hooks and 3-position tack (**K-10518**), with **1/4" vertical pin, K-CP4-61**. Fastens to 3350 mast section with (6) 3/16" (#10) fasteners. Base is 2 1/2" vertical x approximately 2 3/4" wide.

**K-10881****Vertical Gooseneck Pin - 1/4" for 1 1/2" Toggle: K-CP4-61:**

Clevis pin is 1/4" diameter x 1 7/8" long, for use with **K-10881** Gooseneck Bracket.

**Gooseneck Toggle/Tack Assembly w/ Reef Hooks: K-10518A:**

Used with the **K-10881** gooseneck bracket, and Kenyon 2333 or "D" section boom, this combination Toggle/Tack/Reef Hook Assembly features 3 tack positions and includes 3/8" tack fastpin, **K-10399**. Takes **1/4" vertical pin and 3/8" horizontal pin**. Two 1/4" reef hooks allow for ease of reefing from either side of the boom. Toggle portion is 1 1/2" high x 11/16" wide with 1" between pin centers. Unit (excluding Reef Hooks) is 4" high x 11/16" wide x 2 1/4" long.

**K-10518A****Gooseneck Toggle/Tack Assembly: K-10518N:**

As **K-10518A**, above, but without reef hooks. This combination Toggle and Tack Assembly features 3 tack positions and includes 3/8" tack fastpin, **K-10399**. Takes **1/4" vertical pin and 3/8" horizontal pin**. Toggle portion is 1 1/2" high x 11/16" wide with 1" between pin centers. Unit is 4" high x 11/16" wide

x 2 1/4" long.



**K-10518N**

***Gooseneck Toggle/Tack Assembly: K-10518E:***

As **K-10518N**, above, but modified to increase the Tack Setback by 1". Toggle portion is 1 1/2" high x 11/16" wide with 1" between pin centers. **Takes 1/4" vertical pin and 3/8" horizontal pin.** Toggle fits all Kenyon Mast Brackets and a variety of Gooseneck Slides designed for a 1 1/2" Toggle with a 1/4" vertical pin. Toggle portion is 1 1/2" high x 11/16" wide with 2" between pin centers. Unit is (maximum) 4" high x 11/16" wide x 2 7/8" long. Specially for use with Gooseneck Slide for 3/4" Internal Flat Track, [PP-M6A](#), and **as used on the Freedom 25.**



**K-10518E**

***Tack Fastpin for 1 1/2" Toggle: K-10399 (FP-6-28):***

SS Fastpin is 3/8" diameter x 7/8" long. Used in 1 1/2" Toggle/Tack/Reef Hook Assemblies **K-10518A**, and **K-10518N**.

---

***Gooseneck / Vang Bracket for 1 1/2" Toggle w/ 3/8" Pin: K-11239-1:***

Designed for use with the **K-10345** Gooseneck Toggle/Tack Assembly for E-Section and larger Booms, this SS welded Bracket **takes a 3/8" Vertical pin, K-CP6-76**, and has clearance for a **1 1/2" Toggle**. Fastens to 3350 Mast Section with (8) 1/4" (6mm) fasteners. Base is 5" vertical x approximately 2 3/4" wide. Can also be used as **Vang Bracket** with addition of appropriate **Vang Toggle**, below. **As used on 11 Meter.**



**K-11239-1**

***Gooseneck Clevis Pin - 3/8": K-CP6-76:***

Vertical Clevis Pin for use with the **K-11239-1** Gooseneck/Vang Bracket. SS pin is 3/8" diameter with 2 3/8" grip length.

**Gooseneck Toggle/Tack Assembly w/ Reef Hooks: K-10345A:**

Used with the **K-11239-1** Gooseneck Bracket, and Kenyon "E" section boom, this combination Toggle/Tack/Reef Hook Assembly features 3 tack positions and includes 3/8" tack fastpin, **K-10557**. Takes 3/8" vertical and horizontal pins. Two reef hooks allow for ease of reefing from either side of the boom. Toggle portion is 1 1/2" high x 7/8" wide with 1" between pin centers. Unit (excluding Reef Hooks) is 4" high x 7/8" wide x 2 1/4" long. Attaches directly to any of the Kenyon SS Gooseneck Brackets designed for a 1 1/2" Toggle with 3/8" vertical pin. Fits E section, 3550, and 3756 standard boom goosenecks.

**K-10345A****Tack Fastpin for 1 1/2" Toggle: K-10557:**

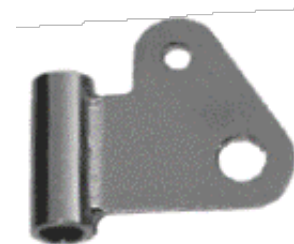
SS Fastpin is 3/8" diameter x 1" long. Used in 1 1/2" Toggle/Tack/Reef Hook Assembly **K-10345**. FP-6-32

**Vang Toggle: K-10963:**

Used with the **K-11239-1** Gooseneck Bracket, this SS toggle results in a fully pivoting vang bracket to minimize working stresses. Large 3/4" horizontal hole allows for attachment of any shackle or block.

**K-10963****Vang Toggle w/ 14mm Pin hole: K-10963-2:**

Welded SS Vang Toggle for use with any Kenyon Gooseneck Bracket with a 3/8" Pin. SS tube is 1 1/2" long with Bronze bushed hole for 3/8" Vertical Pin. Welded SS Tab is 5mm (3/16") thick and projects 2 3/8" (60mm) out from tube. Tab has 14mm (9/16") hole for attachment of Vang and 8mm (5/16") hole for attachment of Vang Tackle. As used with [Sparcraft Pnevvang](#) and others.

**Vang Toggle for Hard Vang: K-11788:**

Used with the **K-11239-1** and other Kenyon Gooseneck Brackets with a 3/8" Pin, this SS toggle has (1) 9/16" (14mm) hole for Vang attachment and (3) 5/16" (8mm) holes for blocks. As used with [Sparcraft Pnevvang](#) and others.

**K-11788**

**Special Gooseneck Bracket for Isomat NB1 Boom: K-11239-NB1:**

Special Kenyon 3350 Gooseneck Bracket is designed for use with a variety of smaller Isomat Booms using new-style Gooseneck Assemblies. Cast aluminum bracket **takes a 12mm vertical pin, Iso NB1-1**, and has clearance for a **2" toggle**. Bracket is 3 7/8" (98mm) high x 2 3/4" (70mm) wide, and is fastened with four (4) 1/4" (6mm) rivets. Can also be used as **Vang Bracket** with addition of a variety of Isomat vang toggles. 4421

**K-11239-NB1****Vang Bracket, non-pivoting: K-11004:**

Formed base plate has welded vertical triangle (non-pivoting) with 1/2" diameter hole for attachment of vang tackle block. Fastens to 3350 mast section with (6) 3/16" (#10) fasteners. Base is 2 1/2" vertical x approximately 2 3/4" wide.

**K-11004****Vang Toggle for Rigid Vang – Special:**

A variety of semi-custom Toggles, or Bracket/Toggle combinations are available to fit rigid (or solid) vangs produced by a number of manufacturers. Please specify manufacturer, model and Pin size.

---

**Mast Boot for 3350 Deck Collar: K-11582B:**

White PVC Mast Boot helps prevent leakage at the deck. Slid over mast prior to stepping, it is then secured with a hose clamp on the deck collar and one around the mast. One piece molded construction for optimum fit. Hard molded white PVC Mast Boot is 2" high x 6 3/4" long, and fits **K-11582** Deck Collar.

**3350 Mast Boot Clamp: MBC 5-15:**

All Stainless Steel Clamp for use with any Mast Boot on Kenyon 3350 Mast. 7

**3350 Deck Collar Boot Clamp: MBC 10-20:**

All Stainless Steel Clamp for use with Mast Boots on Kenyon 3350 Deck Collar. 9

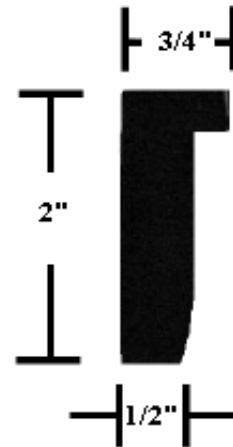
**V****3350 Deck Collar: K-11582:**

Low-profile 3350 Deck Collar, for keel stepped masts, fastens to deck with (6) 1/4" bolts or screws. Base size (max.) is 9" x 7 1/4" x

15/16" high, with 3/16" thick flanges. Cast in 356 Aluminum with clear anodized finish. For use with standard Kenyon mast wedge, **K-77509**. \*

***Mast Wedge for 3350 Deck Collar: K-77509-15:***

Extruded rubber Mast Wedge with flange provides even loading all around the mast. One-piece construction is far superior to individual wedges, which cause point loading leading to deformation. Cut to length for use with low-profile 3350 Deck Collar, **K-11582**.



**K-77509**

***Electrical Access Plate: RR-72-99:***

Electrical Access Plate is designed to allow access to internal electrical plugs above the mast step, without having to unstep the mast. Saves much in frustration and money by allowing you to check mast wiring connections with the mast up. SS Plate is 4 1/2" x 2" and is designed to cover a 3" x 1 1/4" vertical slot in the side of the mast, just above the top of the mast step. Plate is slightly curved to fit a variety of mast sections and attaches with (4) 1/4-20 RH machine screws (included).



**RR-72-99**

***Mast Step Casting: K-10887:***

Mast Step for Kenyon 3350 fastens to deck, keelson, or to [K-1374 Mast Hinge Assembly](#) for use as tabernacle. Unit is (maximum) 5 1/8" long x 3 5/16" wide x 1 3/8" high, casting is undrilled. Cast in 356 Aluminum with black epoxy finish.



**K-10887**

***Mast Step Casting: K-10868:***

As **K-10887**, but milled for use with **K-11205** 4-sheave exit block. Both sides have 1 1/2" flush cutout, on centerline. Drilled with (2) 5/16" holes for attachment to Deck, or to [K-1374 Mast Hinge Assembly](#).

***Mast Step Casting - Machined: K-11204:***

As **K-10868**, but fully machined for attachment of **K-11205** 4-sheave exit block, and [K-1374 Hinged Mast Step Assembly](#). As used on **K-11203A** Hinged Mast Step Assembly with 4-Sheave Exit

Block.

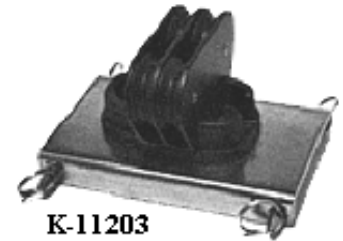
***Hinged Mast Step Assembly: K-10886A:***

Hinged tabernacle assembly for 3350 section allows for easy mast-stepping. Consists of ***K-10887*** Mast Step casting bolted to ***K-1374 Mast Hinge Assembly***.



***Hinged Mast Step Ass'y w/ 4-Sheave Exit Block: K-11203A:***

As ***K-10886A***, but with a 4-sheave exit block assembly for use with up to 4 internal halyards. Halyards (2 ea. port & starboard) may be lead up to cleats on the mast, or out at 90 degree across the deck. Consists of ***K-11204*** Mast Step casting with ***K-11205*** 4-sheave exit/turning block, bolted to ***K-1374 Mast Hinge Assembly***. For 3350 Mast.



***Four-sheave Exit Block Ass'y for 3350 Mast Step: K-11205-4A:***

Four-sheave exit block assembly for use with up to 4 internal halyards, bolts to 3350 Mast Step, ***K-11204***. Halyards (2 ea. port & starboard) may be lead up to cleats on the mast, or out at 90 degree across the deck. Unit is (maximum) 4 7/8" long, and fits in mast cutout 1 3/8" wide x 2 1/2" high, and includes (4) Aluminum sheaves, ***K-198-7A***, for use with wire or rope.

***Halyard Organizer Plate: K-1374HP:***

Halyard Organizer Plate is designed to fit under the ***K-1374 Mast Hinge Assembly***, using the same deck bolts. New-style formed SS Plate has a total of fourteen (14) 1/2" holes **on 4 sides** for attaching halyard turning blocks, boom vang, and halyard shackles. Base is 7 1/2" long x 4" wide and mounts with (4) 5/16" bolts on 4 1/4" x 2 3/4" hole centers. Plate measures 8 1/2" x 5 3/4" overall and can also be drilled for use with any mast step up to 4" wide.



***Mast Step Base Plate Adapter: K-10868KP:***

Mast Step Base Plate Adapter converts standard mast step for use with external adjustment screws, on keel-stepped rigs. Fastens with (2) 5/16" FH screws in standard holes of E, 2740, 3049, 3350, 3550, 3656, and other Kenyon mast steps. Allows for precise positioning without unstepping the mast. Anodized aluminum plate is 5/16" thick and measures 8 1/2" long x 5" wide. Fastens to keelson with (4) 3/8" bolts in Slots that allow for 1 1/2" adjustment. Slot centers are 3 5/8" athwartships, and 5 3/4" fore & aft. **As used on**



## **Wavelength 24.**

~ [Back to Kenyon Main Page](#) ~

~ [Back to Rig-Rite Home Page](#) ~